

FL200-WS Fingerprint Lock

BIOQIN®



Auto Wake up
Fingerprint Sensor



Touch Screen Keypad



Mifare Card Reader



Multi ID User

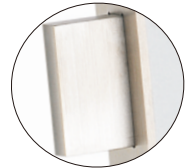
FL200-WS Fingerprint Lock

- **Infrared Auto Wake up Fingerprint Sensor**
We adopt our own fingerprint algorithm with world class identification speed. Our sensor is waterproof, dust proof and scratch proof.



- **Multi level for access**
With high security design, FL200-WS support fingerprint, pin and card for access, support user ID each user, very convenient for management.
- **Scramble Code Function for PIN User by Touch Screen Keypad**
As the PIN user, we have the strong function for you to have the right to input some random code before or after your password, make your input safe for anybody besides.

- **Made of Stainless Steel 100%**
We use Stainless steel 100% to make our FL200-WS have strong corrosion resistant. This is always user's love in Beach ReMsort, Cruised and Buildings beside the coastal cities.



- **Bolt Spanner**
Use Stainless steel 100% spanner, you can control the dead bolt freely when inside the room.
- **Support Four Ways to Open the Door**
Our smart lock support right hand open, left hand open, right hand reverse open and left hand reverse open.

Model No:	FL200-WS
Product Name:	Fingerprint Lock

User Information	100 Fingerprint, 50 groups pin, 200 card
Sensor	Infrared auto wakeup sensor, which is waterproof, dustproof and scratchproof
Sensor Resolution	500 DPI
Identification Speed	1 second
FRR	< 0.1%
FAR	< 0.001%
Keypad	Touch screen keypad
Scramble code function	Yes
Mortise	Standard Euro mortise
Handle	C handle, E handle for your choice, customer requested type is also available
Material	100% Stainless steel with 304 grade
Cylinder hole	Round hole with hidden cylinder cover
Deadbolt Spanner	Yes
Axis distance from handle center to cylinder center	85mm, other sizes could be customizable
Backset	35,45,60mm is available
Battery	4 AAA alkaline batteries, 18 months in normal state
Mechanical key for emergency	Yes
Indication	Light, sound(Mute, Beep, or optional music)
Low Voltage warning	Yes
Humidity	20%-80%
Working temperature	-10° C - 60° C
Door sensor	Yes
Anti-Panic exit function	Yes
Passage mode for meeting room	Yes



BIOQIN[®]
www.bioqin.com

Authorized Distributor: